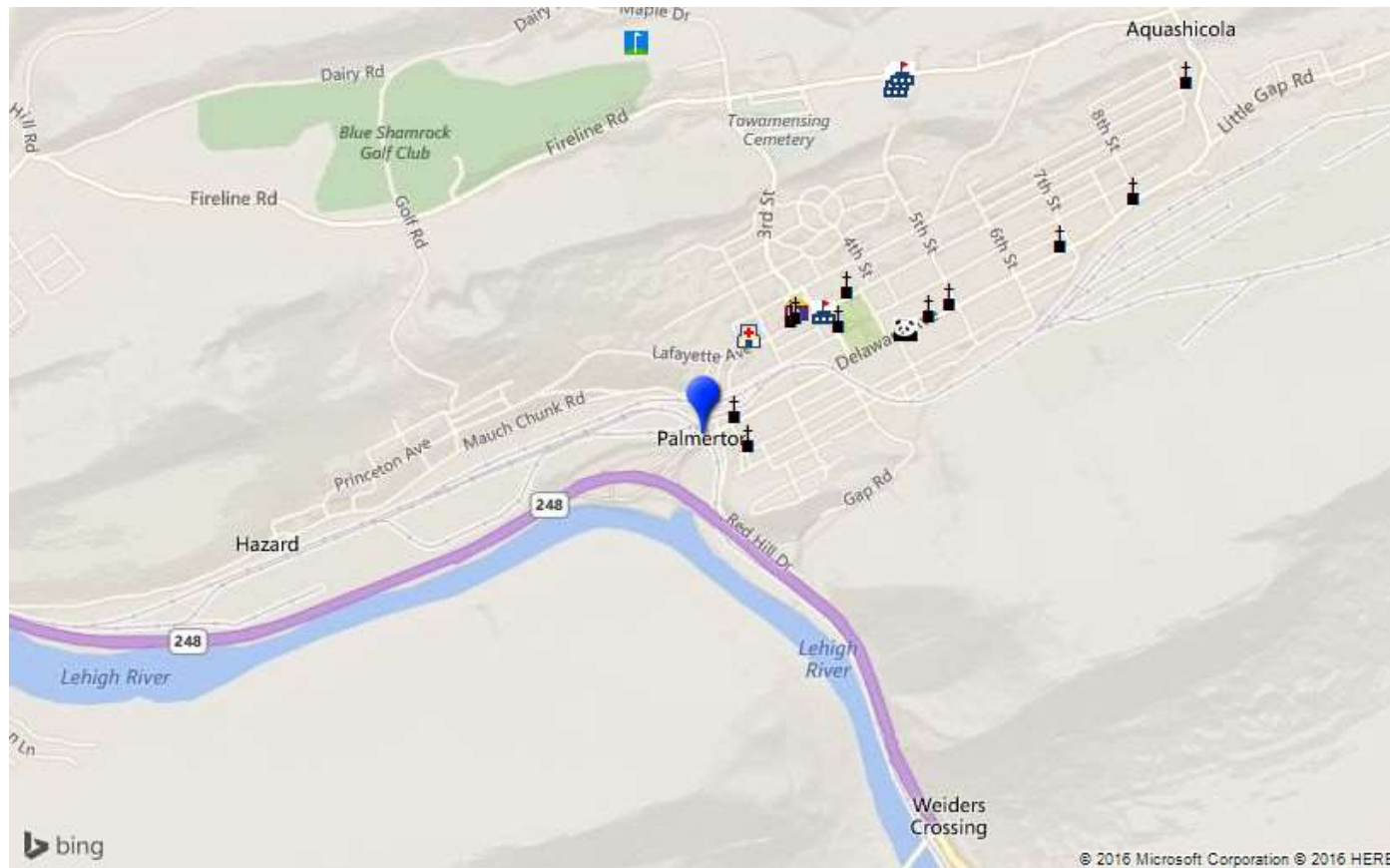




# Palmerton



Prepared by RE/MAX real estate



© Homes Media Solutions

The accuracy of all information is deemed reliable, but is not guaranteed.



## School Information

---

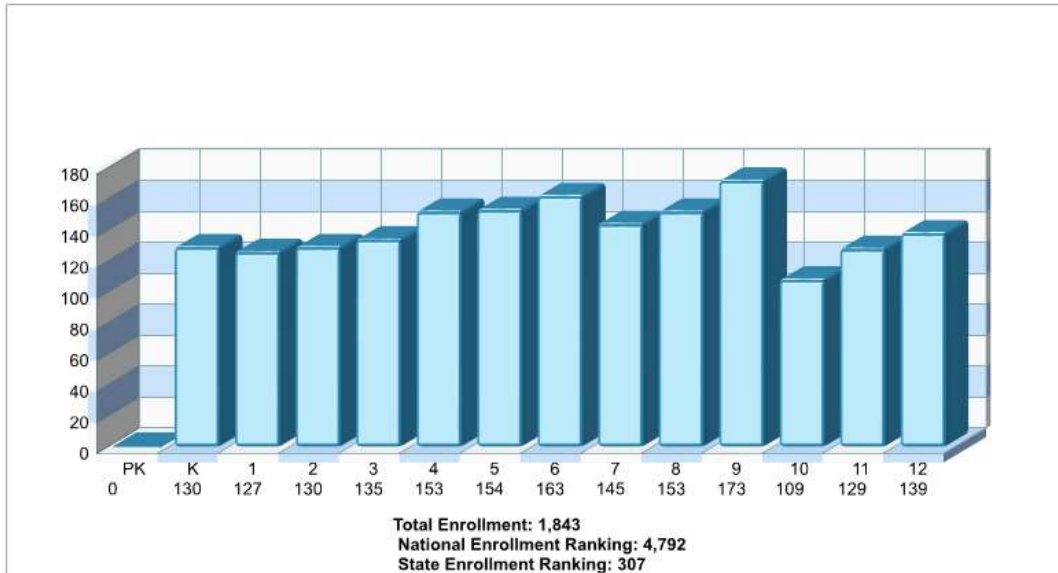
# Palmerton

Prepared by RE/MAX real estate

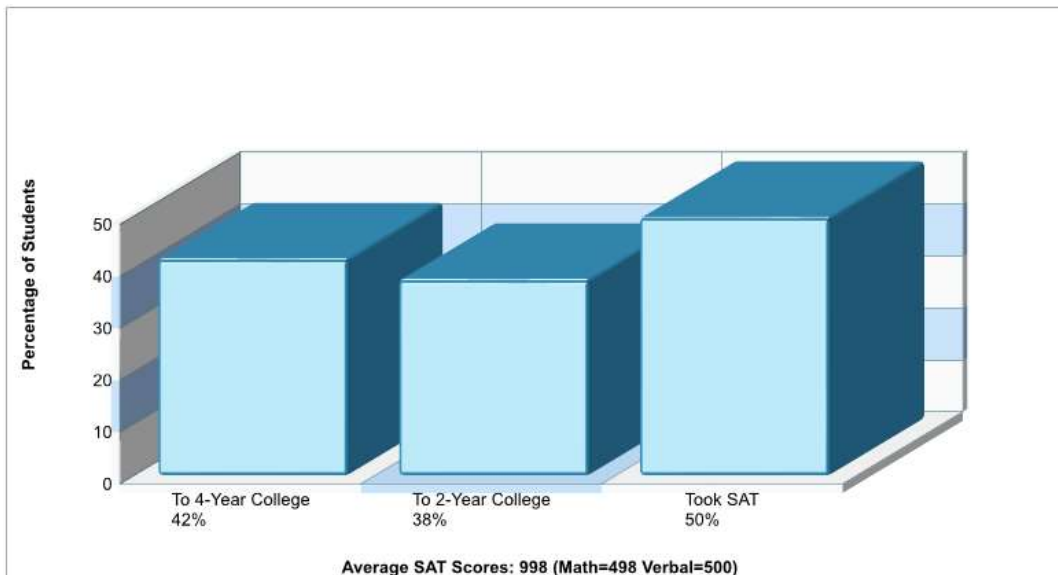




## Location: Palmerton, PA Student Enrollment By Grade



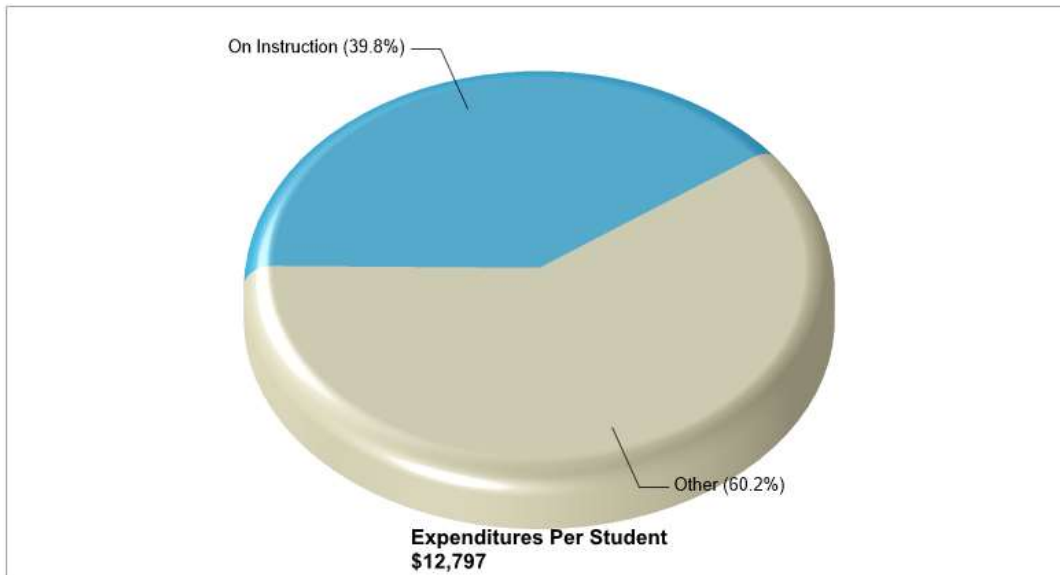
## Location: Palmerton, PA High School Statistics



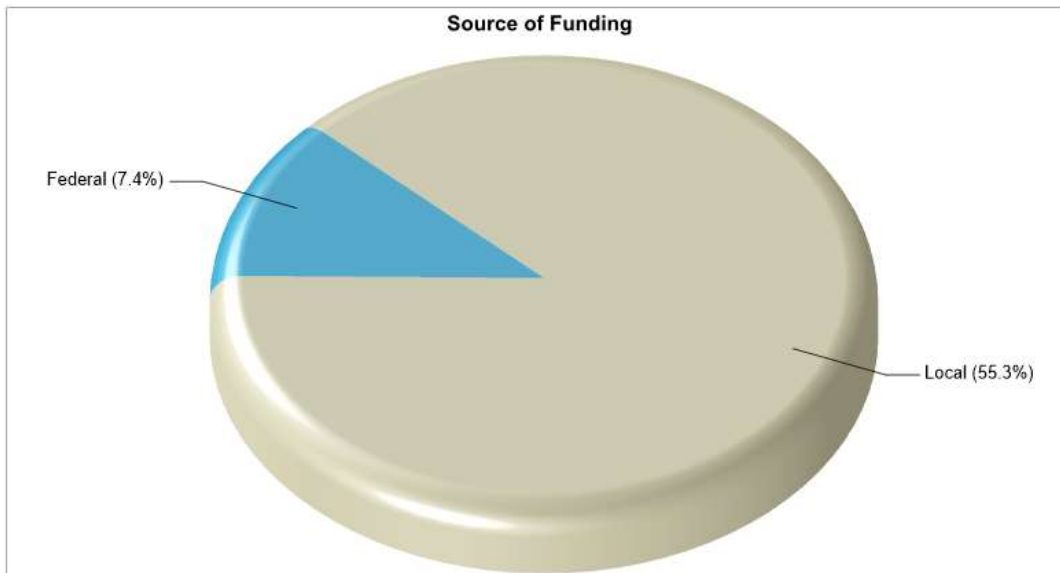
Prepared by RE/MAX real estate



## Location: Palmerton, PA School Expenditures



## Location: Palmerton, PA School Funding



Prepared by RE/MAX real estate



## Public Schools for District

**S S PALMER EL SCH** **Phone:** (610)826-7538  
 298 LAFAYETTE AVE, PALMERTON, PA 18071 **Grades:** 02 - 06

<p><b>Distance from Subject:</b> 0.4 Miles  <b>Student/Teacher Ratio:</b> 18.4 to 1  <b>Mascot:</b> Blue Bombers  <b>Average SAT:</b> N/A  <b>Students Taking SAT:</b> N/A  <b>Average ACT:</b> N/A  <b>Students Taking ACT:</b> N/A  <b>Enrollment By Grade:</b> 2-76 3-92 4-90 5-90 6-112</p>	<p><b>School Type:</b> Regular  <b>Students/Teachers:</b> 460/25  <b>School Colors :</b> Royal  <b>Graduates To 2-Year College:</b> N/A  <b>Graduates To 4-Year College:</b> N/A  <b>National Merit Finalists:</b> N/A</p>
---	--

**PALMERTON AREA JHS** **Phone:** (610)826-2492  
 3529 FIRELINE RD, PALMERTON, PA 18071 **Grades:** 07 - 08

<p><b>Distance from Subject:</b> 1.0 Miles  <b>Student/Teacher Ratio:</b> 15.7 to 1  <b>Mascot:</b> N/A  <b>Average SAT:</b> N/A  <b>Students Taking SAT:</b> N/A  <b>Average ACT:</b> N/A  <b>Students Taking ACT:</b> N/A  <b>Enrollment By Grade:</b> 7-145 8-153</p>	<p><b>School Type:</b> Regular  <b>Students/Teachers:</b> 298/19  <b>School Colors :</b> Royal  <b>Graduates To 2-Year College:</b> N/A  <b>Graduates To 4-Year College:</b> N/A  <b>National Merit Finalists:</b> N/A</p>
--	--

**PALMERTON AREA HS** **Phone:** (610)826-3155  
 3525 FIRELINE RD, PALMERTON, PA 18071 **Grades:** 09 - 12

<p><b>Distance from Subject:</b> 1.1 Miles  <b>Student/Teacher Ratio:</b> 17.2 to 1  <b>Mascot:</b> N/A  <b>Average SAT:</b> 998(Math 498 Verbal 500)  <b>Students Taking SAT:</b> 50%  <b>Average ACT:</b> N/A  <b>Students Taking ACT:</b> N/A  <b>Enrollment By Grade:</b> 9-173 10-109 11-129 12-139</p>	<p><b>School Type:</b> Regular  <b>Students/Teachers:</b> 550/32  <b>School Colors :</b> Royal  <b>Graduates To 2-Year College:</b> 38%  <b>Graduates To 4-Year College:</b> 42%  <b>National Merit Finalists:</b> N/A</p>
--	--

**PALMER FRANKLIN EDUCATION CENTER** **Phone:** (610)826-4914  
 680 FOURTH ST, PALMERTON, PA 18071 **Grades:** KG - 01

<p><b>Distance from Subject:</b> 1.1 Miles  <b>Student/Teacher Ratio:</b> 18.9 to 1  <b>Mascot:</b> N/A  <b>Average SAT:</b> N/A  <b>Students Taking SAT:</b> N/A  <b>Average ACT:</b> N/A  <b>Students Taking ACT:</b> N/A  <b>Enrollment By Grade:</b> K-83 1-87</p>	<p><b>School Type:</b> Regular  <b>Students/Teachers:</b> 170/9  <b>School Colors :</b> N/A  <b>Graduates To 2-Year College:</b> N/A  <b>Graduates To 4-Year College:</b> N/A  <b>National Merit Finalists:</b> N/A</p>
--	---

**TOWAMENSING EL SCH** **Phone:** (610)681-4024  
 7920 INTERCHANGE RD, LEHIGHTON, PA 18235 **Grades:** KG - 06

<p><b>Distance from Subject:</b> 5.7 Miles  <b>Student/Teacher Ratio:</b> 15.7 to 1  <b>Mascot:</b> Bombers  <b>Average SAT:</b> N/A</p>	<p><b>School Type:</b> Regular  <b>Students/Teachers:</b> 362/23  <b>School Colors :</b> Royal  <b>Graduates To 2-Year College:</b> N/A</p>
--	---

Prepared by RE/MAX real estate



## Public Schools for District

**Students Taking SAT:** N/A

**Average ACT:** N/A

**Students Taking ACT:** N/A

**Enrollment By Grade:** K-47 1-40 2-54 3-43 4-63 5-64 6-51

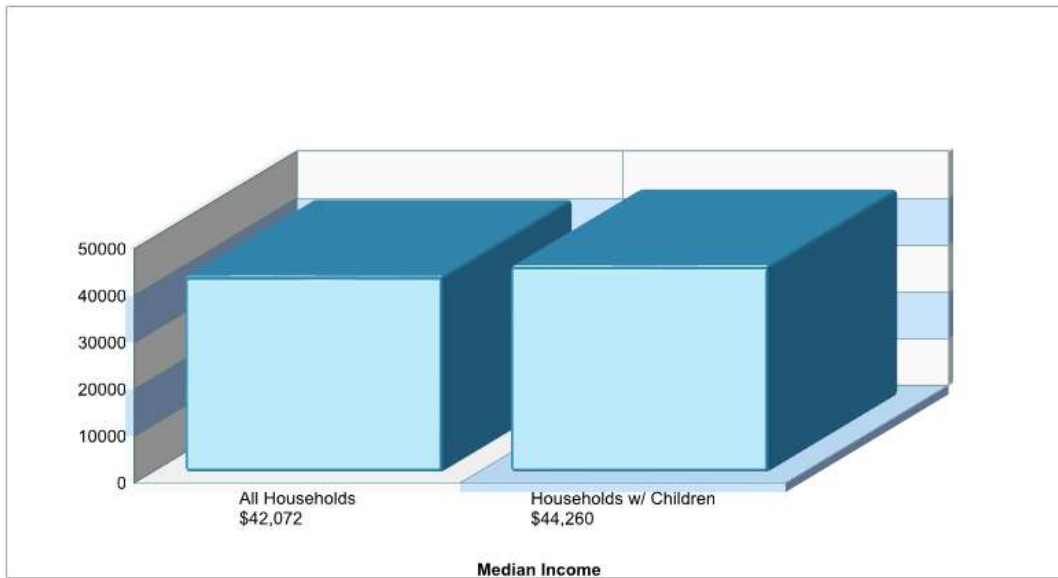
**Graduates To 4-Year College:** N/A

**National Merit Finalists:** N/A

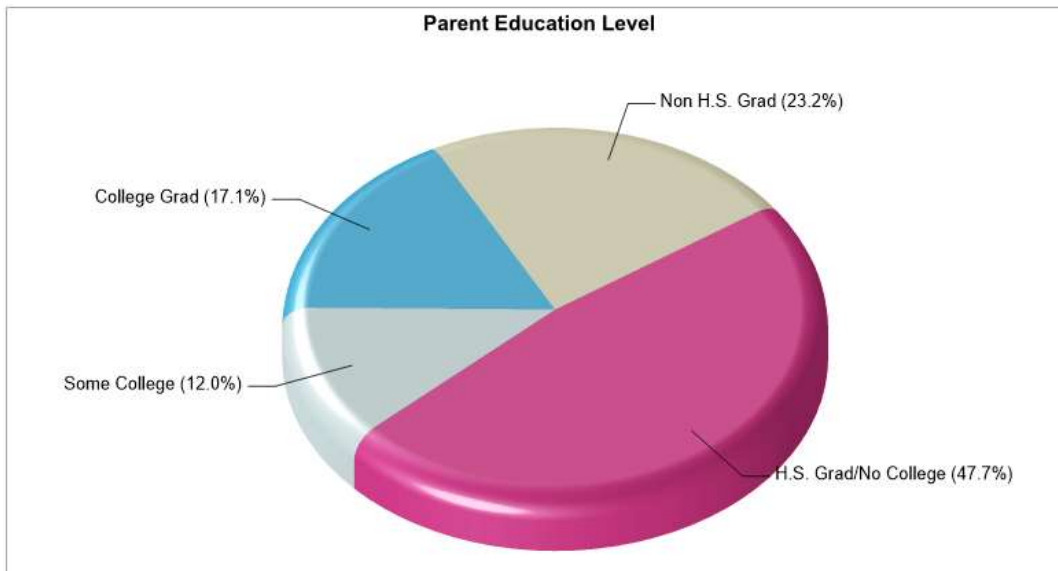
Prepared by RE/MAX real estate



## Location: Palmerton, PA Household Income



## Location: Palmerton, PA Parent Education Level



Prepared by RE/MAX real estate



## Private Schools

### ST JOHN NEUMANN REGIONAL SCHOOL

259 LAFAYETTE AVE, PALMERTON, PA 18071

**Distance from Subject:** 0.4 Miles

**Affiliation:** Roman Catholic

**Students:** 79

**Student/ Homeroom Ratio:** N/A

**School Colors:** N/A

**Enrollment By Grade:** K-11 1-10 2-10 3-6 4-10 5-8 6-8 7-9 8-7

**Phone:** N/A

**Grades:** KG - 8

**School Type:** Regular

**Gender:** Coed

**Student/Teacher Ratio:** 8.9 to 1

**Mascot:** N/A

### BETHLEHEM CHRISTIAN SCHOOL BLUE MOUNTIAN

675 BLUE MOUNTAIN DR, CHERRYVILLE, PA 18035

**Distance from Subject:** 5.1 Miles

**Affiliation:** Christian

**Students:** 31

**Student/ Homeroom Ratio:** N/A

**School Colors:** N/A

**Enrollment By Grade:** K-5 1-8 2-1 4-7 5-5 6-5

**Phone:** N/A

**Grades:** KG - 6

**School Type:** Regular

**Gender:** Coed

**Student/Teacher Ratio:** 7.0 to 1

**Mascot:** N/A

### EDUCARE OF PA

413 BRIDGE ST, WEISSPORT, PA 18235

**Distance from Subject:** 5.4 Miles

**Affiliation:** Unknown

**Students:** 22

**Student/ Homeroom Ratio:** N/A

**School Colors:** N/A

**Enrollment By Grade:** 7-4 8-5 9-3 10-4 11-3 12-3

**Phone:** (610) 379-5461

**Grades:** 7 - 12

**School Type:** Regular

**Gender:** Coed

**Student/Teacher Ratio:** 7.3 to 1

**Mascot:** N/A

### BHA ACADEMY

325 ALUM ST, LEHIGHTON, PA 18235

**Distance from Subject:** 5.4 Miles

**Affiliation:** Unknown

**Students:** 28

**Student/ Homeroom Ratio:** N/A

**School Colors:** N/A

**Enrollment By Grade:** K-2 1-1 2-4 3-5 4-4 5-4 6-8

**Phone:** N/A

**Grades:** KG - 6

**School Type:** Regular

**Gender:** Coed

**Student/Teacher Ratio:** 2.7 to 1

**Mascot:** N/A

### LIGHTHOUSE BAPTIST SCHOOL

1349 GREEN ST, LEHIGHTON, PA 18235

**Distance from Subject:** 5.5 Miles

**Affiliation:** Baptist

**Students:** 38

**Student/ Homeroom Ratio:** N/A

**School Colors:** N/A

**Enrollment By Grade:** K-6 1-3 2-6 3-3 4-3 5-1 6-4 8-1 9-6 11-2 12-3

**Phone:** (610) 377-0641

**Grades:** KG - 12

**School Type:** Regular

**Gender:** Coed

**Student/Teacher Ratio:** 8.6 to 1

**Mascot:** N/A

### PACKER RIDGE ACADEMY

50 MAUCH CHUNK ST, LEHIGHTON, PA 18235

**Distance from Subject:** 6.3 Miles

**Affiliation:** Unknown

**Phone:** N/A

**Grades:** 7 - 12

**School Type:** Regular

**Gender:** Coed

Prepared by RE/MAX real estate





## Private Schools

**Students:** 39  
**Student/ Homeroom Ratio:** N/A  
**School Colors:** N/A  
**Enrollment By Grade:** 7-3 8-9 9-9 10-6 11-8 12-4

**Student/Teacher Ratio:** 9.8 to 1  
**Mascot:** N/A

---

**ST JOSEPH REGIONAL ACADEMY**  
25 W 6TH ST, JIM THORPE, PA 18229  
**Distance from Subject:** 8.0 Miles  
**Affiliation:** Roman Catholic  
**Students:** 123  
**Student/ Homeroom Ratio:** N/A  
**School Colors:** Royal  
**Enrollment By Grade:** K-11 1-14 2-14 3-19 4-8 5-15 6-14 7-14 8-14

**Phone:** (570) 325-3186  
**Grades:** KG - 8  
**School Type:** Regular  
**Gender:** Coed  
**Student/Teacher Ratio:** 12.9 to 1  
**Mascot:** Hammens

---

**CONCORDIA LUTHERAN CHURCH & SCHOOL**  
3285 PHEASANT DR, NORTHAMPTON, PA 18067  
**Distance from Subject:** 8.8 Miles  
**Affiliation:** Lutheran Church - Missouri Synod  
**Students:** 61  
**Student/ Homeroom Ratio:** N/A  
**School Colors:** N/A  
**Enrollment By Grade:** PK-10 K-5 1-8 2-6 3-5 4-8 5-6 6-7 7-5 8-8

**Phone:** (610) 691-7625  
**Grades:** PK - 8  
**School Type:** Regular  
**Gender:** Coed  
**Student/Teacher Ratio:** 6.4 to 1  
**Mascot:** N/A

Prepared by RE/MAX real estate